



**NEW
PRODUCTS
CATALOGUE**

**20
23**



Major Tech was founded in 1992 with its focus on developing its own brand of Test & Measuring instruments, a first for South Africa. From its humble beginnings Major Tech has become synonymous with innovation and quality throughout its product range. Major Tech is heavily committed to product research and allocates significant resources to an ongoing research program.

This type of investment ensures that Major Tech is constantly at the forefront of technologic development and those new ideas and concepts can rapidly be brought to market. The success of Major Tech and their experience in developing unique products assisted the company in developing meters and test tools for South African electricians, but in recent years we now attract customers from all over the globe. Our focus is to ensure that we meet the latest IEC safety standards while still delivering testers with unique features and functions. Major Tech was one of the first companies worldwide to introduce double injection housings for test meters in the early 2000's, and have now included this durable housing wherever possible throughout our range.

Our ever popular MT1800 Series multimeters were developed with IP67 waterproof housings especially for mining applications and arduous areas. Due to the enhancement of the Solar Industry and the growth of this new energy, DC testing requirements are above the norm. Major Tech have recently upgraded the MT1885 and MT1887 to measure 1500V DC plus the added feature of Bluetooth.

Infrared (IR) thermometers has been the focus for Major Tech for many years, but as technology changes we have found the need to introduce Infrared Thermal Imaging. We have in recent years developed a range of Thermal Imagers to meet the needs of customers. Recently introduced is the low cost MTi11 Thermal Imager which meets the needs of the independent electrician, helping solve possible problems in DB boards and connections. Our advanced Thermal Imaging and DMM technology has allowed us to introduce the MT2005, a combined DMM + Thermal Imager for professionals with the added feature of Bluetooth for image transfer.

Software has become an integral part of measuring tools for users, and in recent times we have introduced Bluetooth to many of our meters, this allows data and measurements to be transmitted to the free App for both iOS and Android devices. The Bluetooth function is available for some DMM's, Laser Distance Meters, Clamp Meters, Thermal Imagers and Environmental Meters.

Major Tech has been exporting limited products to Australia over the years, however we are confident that there will be a demand for our full product range offering. In August 2021 Major Tech opened their first international office and warehouse in Brendale, Brisbane specifically concentrating on our Test & Measurement range and electrician hand tools.

We look forward to you experiencing Major Tech's quality, enthusiasm and service.

THERMAL IMAGING CLAMP METER



1000A AC/DC THERMAL CLAMP METER

TRUERMS

The MT784 is a CAT IV 600V True RMS 1000A AC/DC digital clamp meter incorporating an 80 x 80 pixel Thermal Imager with a range from -20°C to 260°C. This clamp meter has a large 6000 count colour TFT LCD display that provides fast sampling times and high accuracy measurements. The meter has been designed to measure 1500V DC purposely for the Solar industry, 1000V AC, K-Type temperature, frequency, capacitance, AC+DC Voltage and resistance measurements, plus the Low Z range function has a low pass filter to eliminate errors caused by "Ghost" voltages. The 100ms Inrush current detects starting up currents of electric motors, input surge current, or switch-on surge currents, this is the maximum instantaneous input current drawn by an electrical device when first turned on. The meter has a built-in record and store function and displays trend capture, using the Bluetooth function the meter wirelessly transmits data to the Android or iOS mobile App allowing the user to view, save, organise and share recordings. Added features is Non-Contact voltage detection, Peak Hold, Min/Max and Average, Data hold function and a built-in flashlight for dimly lit areas. The double injection moulded housing is IP65 waterproof.

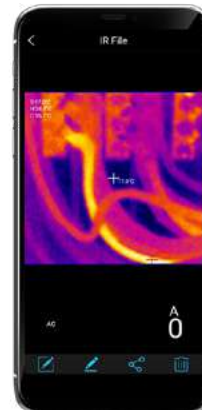
Features

- 6000 count 2.4" TFT Colour LCD display
- Ø37mm Cable Clamp size
- Measurement of DC voltage to 1500V and AC voltage up to 1000V
- AC+DC TRMS Voltage
- INRUSH Current Measurements
- Capacitance to 100mF
- K-type Temperature measurement from -40°C to 1000°C
- Thermal Temperature -20°C to 260°C
- 80 x 80 pixel Thermal Imager Resolution
- Image Frequency to 50Hz
- Logging function with Trend Capture
- NCV – Non-Contact Voltage Detector
- Built-In Flashlight
- Continuity buzzer and Diode Test
- Max, Min and Average with Time Stamp
- Auto Power Off
- Optional MT740 Flexible Coil Clamp for measurement to 3000A AC



MT784

Function	Range	Accuracy
Imaging and Optical Data		
Field of View	21° x 21° / 0.5m	
Spatial Resolution	4.53mrad	
Thermal sensitivity	<0.1°C at 30°C / 100mK	
Image Frequency	50Hz	
IR Resolution	80 x 80 Pixels	
Imaging Presentation		
Display	2.4" TFT Colour LCD, 240 x 320 pixels	
Measurements		
Thermal Temperature Range	-20°C to 260°C	±(3.0% +3°C)
Measurement Analysis		
Spot	Center Spot	
Automatic Detection	Hot Point or Cold Point	
Emissivity Correction	Variable 0,01 to 0,99 in 0,01 steps	
Colour Palette	Iron / Rainbow / Grey / Grey Inverted / Feather	
Focus Mode	Focus Free	
Focal Length	7.5mm	
Spectral range	8 - 14µm	
Data Communication Interface	Bluetooth BLE	
Clamp Meter		
Jaw Size	37mm	
DC Current	60.00A – 1000A	±(2.0% +8)
AC Current	60.00A – 1000A	±(2.5% +5)
Flexible Coil Current (Optional)	30.00A – 3000A	±(3.0% +5)
DC Voltage	600.0mV – 1500V	±(0.5% +5)
AC Voltage	6.000V – 1000V	±(1.2% +5)
LowZ AC Voltage	6.000V – 300V	±(3.0% +40)
AC+DC TRMS Voltage	6.000V – 1000V	±(2.5% +20)
LowZ AC+DC Voltage	6.000V – 300V	±(3.5% +40)
Resistance	600.0Ω – 60MΩ	±(0.8% +5)
Frequency	60.00Hz – 10.00kHz	±(0.2% +5)
Capacitance	60.00nF – 100.0mF	±(3.0% +8)
K-Type Temperature	-40°C to 1000°C	±(1.5% +3°C)
Duty Cycle	10.0% to 90%	±(1.2% +8)
Size	270 x 95 x 42mm	
Weight	550g	

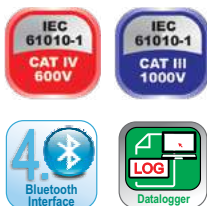


File transfer via Bluetooth to free iOS or Android app (phone not included)

TRUERMS



MT782



1000A AC/DC CLAMP METER

The MT782 is a CAT IV 600V True RMS 1000A AC/DC digital clamp meter. This clamp meter has a large 6000 count colour TFT LCD display with an analogue bargraph that provides fast sampling times and high accuracy measurements. The meter has been designed to measure 1500V DC purposely for the Solar industry, 1000V AC, K-Type temperature, frequency, capacitance, AC+DC Voltage and resistance measurements. The Low Z ACV range has a low pass filter to eliminate errors caused by "Ghost" voltages. The 100ms Inrush current detects starting up currents of electric motors, input surge current, or switch-on surge currents, this is the maximum instantaneous input current drawn by an electrical device when first turned on. The meter has a built-in record and store function and displays trend capture, using the Bluetooth function the meter wirelessly transmits data to the Android or iOS mobile App allowing the user to view, save, organise and share recordings. Added features is Non-Contact voltage detection, Peak Hold, Min/Max and Average, Data hold function and a built-in flashlight for dimly lit areas. The double injection moulded housing is IP65 waterproof.

Features

- 6000 count 2.4" TFT Colour LCD display
- Ø37mm Cable Clamp size
- Measurement of DC voltage to 1500V and AC voltage up to 1000V
- AC+DC TRMS Voltage
- INRUSH Current Measurements
- Capacitance to 100mF
- Temperature measurement from -40°C to 1000°C
- Logging function with Trend Capture
- NCV – Non-Contact Voltage Detector
- Built-In Flashlight
- Continuity buzzer and Diode Test
- Max, Min and Average with Time Stamp
- Auto Power Off
- Optional MT740 Flexible Coil Clamp for measurement to 3000A AC

Function	Range	Accuracy
Jaw Size	37mm	
DC Current	60.00A - 1000A	±(2.0% +8)
AC Current	60.00A - 1000A	±(2.5% +5)
Flexible Coil Current (Optional)	30.00A - 3000A	±(3.0% +5)
DC Voltage	600.0mV – 1500V	±(0.5% +5)
AC Voltage	6.000V – 1000V	±(1.2% +5)
LowZ AC Voltage	6.000V – 300V	±(3.0% +40)
AC+DC TRMS Voltage	6.000V – 1000V	±(2.5% +20)
LowZ AC+DC Voltage	6.000V – 300V	±(3.5% +40)
Resistance	600.0Ω – 60MΩ	±(0.8% +5)
Frequency	60.00Hz – 10.00MHz	±(0.2% +5)
Capacitance	60.00nF – 100.0mF	±(3.0% +8)
Temperature	-40°C to 1000°C	±(1.5% +3°C)
Duty Cycle	10.0% to 90%	±(1.2% +8)
AC Current	60.00A - 1000A	±(2.5% +5)
Size	270 x 95 x 42mm	
Weight	550g	



File transfer via Bluetooth to free iOS or Android app (phone not included)

IR THERMOMETER CLAMP METERS



600A AC/DC CLAMP METER

The MT767 is a CAT IV 600V True RMS 600A AC/DC digital clamp meter incorporating an Infrared Thermometer. This clamp meter has a large 6000 count negative LCD display that provides fast sampling times and high accuracy measurements. The Bluetooth function allows the user to transmit data to the Android or iOS mobile App for viewing, organizing and sharing recordings. The meter measures 1000V AC/DC, frequency, capacitance and resistance measurements. The IR Thermometer has a spot ratio of 4:1 and measures temperature from -30°C to +350°C, plus there is a K-Type thermometer input for measurements up to 1000°C. The 100ms Inrush current detects starting up currents of electric motors, input surge current, or switch-on surge currents, this is the maximum instantaneous input current drawn by an electrical device when first turned on. The VFD function allows the user to measure stable voltage in high frequency applications of Variable Frequency Drives. Added features include Relative mode for Capacitance Zero and DCV, ACV and ACA offset adjustment, Non-Contact voltage detection, MAX/MIN and Data hold function plus a built-in flashlight for dimly lit areas. Housed in a modern double moulded rubber housing with a rugged design. This meter is a useful measuring tool for electricians, maintenance and HVAC environments.

Features

- 6000 count negative LCD display
- Ø33mm Cable Clamp size
- Measurement of DC voltage and AC voltage up to 1000V
- Capacitance to 100mF
- Temperature measurement from -20°C to 1000°C
- IR Temperature Spot Ratio 4:1 & measurement from -30°C to 350°C
- INRUSH Current Measurements
- VFD - Variable Frequency Drive voltage value
- NCV – Non-Contact Voltage Detector
- Continuity buzzer and Diode Test
- Built-In Flashlight
- Max/Min
- Data Hold function
- Auto Power Off



Function	Range	Accuracy
Jaw Size	33mm	
DC Current	60.00A - 600A	±(2.8% +8)
AC Current	60.00A - 600A	±(1.5% +10)
DC Voltage	600.0mV - 1000V	±(1.2% +5)
AC Voltage	6.000V - 1000V	±(1.5% +5)
Resistance	600.0Ω - 60MΩ	±(2.0% +5)
Frequency	9.999Hz - 9.99kHz	±(1.5% +6)
Capacitance	999.9nF - 100mF	±(4.0% +6)
Temperature	-20°C - 1000°C	±(3.0% +3°C)
IR Temperature	-30°C - 350°C	±(2.0% +2°C)
Duty Cycle	20.0% - 80%	±(1.2% +5)
Size	236 x 66 x 44mm	
Weight	350g	

TRUERMS



MT767

600A AC/DC CLAMP METER

The MT766 is a CAT IV 600V True RMS 600A AC/DC digital clamp meter incorporating an Infrared Thermometer. This clamp meter has a large 6000 count negative LCD display that provides fast sampling times and high accuracy measurements. The meter measures 1000V AC/DC, frequency, capacitance and resistance measurements. The IR Thermometer has a spot ratio of 4:1 and measures temperature from -30°C to +350°C, plus there is a K-Type thermometer input for measurements up to 1000°C. The VFD function allows the user to measure stable voltage in high frequency applications of Variable Frequency Drives. Added features include Relative mode for Capacitance Zero and DCV, ACV and ACA offset adjustment, Non-Contact voltage detection, MAX/MIN and Data hold function plus a built-in flashlight for dimly lit areas. Housed in a modern double moulded rubber housing with a rugged design. This meter is a useful measuring tool for electricians, maintenance and HVAC environments.

Features

- 6000 count negative LCD display
- Ø33mm Cable Clamp size
- Measurement of DC voltage and AC voltage up to 1000V
- Capacitance to 100mF
- Temperature measurement from -20°C to 1000°C
- IR Temperature Spot Ratio 4:1 & measurement from -30°C to 350°C
- VFD - Variable Frequency Drive voltage value
- NCV – Non-Contact Voltage Detector
- Built-In Flashlight
- Continuity buzzer and Diode Test
- Max, Min and Data Hold function
- Auto Power Off



Function	Range	Accuracy
Jaw Size	33mm	
DC Current	60.00A - 600A	±(2.8% +5)
AC Current	60.00A - 600A	±(1.5% +10)
DC Voltage	600.0mV - 1000V	±(1.2% +5)
AC Voltage	6.000V - 1000V	±(1.5% +5)
Resistance	600.0Ω - 60MΩ	±(2.0% +5)
Frequency	9.999Hz - 9.99kHz	±(1.5% +6)
Capacitance	999.9nF - 100mF	±(4.0% +6)
Temperature	-20°C - 1000°C	±(3.0% +3°C)
IR Temperature	-30°C - 350°C	±(2.0% +2°C)
Duty Cycle	20.0% - 80%	±(1.2% +5)
Size	236 x 66 x 44mm	
Weight	350g	

TRUERMS



MT766

600A AC CLAMP METER

The MT765 is a CAT IV 600V True RMS 600A AC digital clamp meter incorporating an Infrared Thermometer. This clamp meter has a large 6000 count negative LCD display that provides fast sampling times and high accuracy measurements. The IR Thermometer has a spot ratio of 4:1 and measures temperature from -30°C to +350°C, plus there is a K-Type thermometer input for measurements up to 1000°C. The meter measures 1000V AC/DC, frequency, capacitance and resistance measurements. The VFD function allows the user to measure stable voltage in high frequency applications of Variable Frequency Drives. Added features include Relative Mode for Capacitance Zero and DCV, ACV and ACA offset adjustment, Non-Contact voltage detection, Data hold function and a built-in flashlight for dimly lit areas. Housed in a modern double moulded rubber housing with a rugged design. This meter is a useful measuring tool for electricians, maintenance and HVAC environments.

Features

- 6000 count negative LCD display
- Ø33mm Cable Clamp size
- Measurement of DC voltage and AC voltage up to 1000V
- Capacitance to 10mF
- Temperature measurement from -20°C to 1000°C
- IR Temperature Spot Ratio 4:1 & measurement from -30°C to 350°C
- VFD - Variable Frequency Drive voltage value
- NCV – Non-Contact Voltage Detector
- Built-In Flashlight
- Continuity buzzer and Diode Test
- Max, Min and Data Hold function
- Auto Power Off



Function	Range	Accuracy
Jaw Size	33mm	
AC Current	60.0A - 600A	±(2.5% +8)
DC Voltage	600.0mV - 1000V	±(0.8% +5)
AC Voltage	6.000V - 1000V	±(1.5% +5)
Resistance	600.0Ω - 60MΩ	±(2.0% +5)
Frequency	9.999Hz - 9.99kHz	±(1.5% +6)
Capacitance	999.99nF - 10mF	±(4.0% +6)
Temperature	-20°C - 1000°C	±(3.0% +3°C)
IR Temperature	-30°C - 350°C	±(2.0% +2°C)
Duty Cycle	20.0% - 80%	±(1.2% +5)
Size	239 x 66 x 44mm	
Weight	350g	

TRUERMS



MT765



MT713

TRUE RMS 600A AC/DC CLAMP METER

The MT713 is a CAT IV 600V, 6000 count True RMS 600A AC/DC digital clamp meter with indication on a large backlit LCD display, providing fast sampling time with high accuracy. The Smart mode, "AUTO", is a function that automatically identifies DC voltage, AC voltage, Resistance and continuity and automatically displays the measurements. There is a built-in Non-Contact voltage detector, by pressing the NCV button continuously the LCD displays "EF" and will display "-----" when voltage is detected and the buzzer sounds. The meter measures 600V AC/DC, frequency, resistance, temperature and capacitance measurements, plus Inrush current and Peak Voltage value. Other features include a Data hold function and a built-in flashlight for dimly lit areas. Housed in a modern compact housing ideal for electricians, HVAC technicians and students studying electrical.

Features

- 6000 count backlit LCD display
- Ø25mm Cable Clamp size
- Smart Mode automatically identifies DCV, ACV, Resistance and continuity
- Measurement of DC voltage and AC voltage up to 600V
- INRUSH Current Measurements
- NCV – Non-Contact Voltage Detector
- Built-In Flashlight
- Continuity buzzer
- Peak Mode and Data Hold function
- Auto Power Off



Function	Range	Accuracy
Jaws Size	25mm	
DC Current	60.00A - 600A	±(2.0% +3)
AC Current	60.00A - 600A	±(2.0% +3)
DC Voltage	6.000V - 600V	±(0.5% +3)
AC Voltage	6.000V - 600V	±(1.0% +3)
Resistance	600.0Ω - 60MΩ	±(0.5% +3)
Capacitance	6.000nF - 60.00mF	±(2.0% +5)
Frequency	6.000Hz - 10MHz	±(0.1% +2)
Temperature	-30°C - 1000°C	±(2.5% +5)
Size	172 x 64 x 32mm	
Weight	172g	



MT785

1500V DC H & W ANALYSIS CLAMP METER

The MT785 is a CAT IV 600V, 6000 count True RMS H & W analysis clamp meter that measures up to 1000A AC/DC with an analogue bargraph indication on a TFT colour display. The MT785 simultaneously measures and displays Active, Reactive and Apparent Power and Energy, and current harmonic analysis up to the 25th order with THD% calculation in a single phase. The 100ms Inrush current detects starting up currents of electric motors, input surge current, or switch-on surge currents, this is the maximum instantaneous input current drawn by an electrical device when first turned on. The meter has been designed to measure 1500V DC purposely for the Solar industry, 1000V AC, temperature, frequency, capacitance and resistance, plus the Low Z range function has a low pass filter to eliminate errors caused by "Ghost" voltages. The meter has a built in record and store function and displays trend charts, using the Bluetooth function the meter wirelessly transmits data to the Android or iOS mobile App allowing the user to view, save, organise and share recordings.

Features

- 6000 count TFT colour LCD display
- Ø33mm Cable Clamp size
- Measurement of AC and DC current up to 1000V
- TRMS AC voltage to 1000V, DC voltage up to 1500V and AC+DC voltage measurements
- Active, Reactive, Apparent Power & Power Factor on single phase
- AC and DC Power measurements
- Energy measurements on single phase – Active, Reactive and Apparent
- Capacitance to 6000µF
- Trend Capture Function
- INRUSH Current Measurements
- AC Voltage and Current Harmonics (1 – 25) and THD% up to 75Hz (1 – 8 above 75Hz)
- LoZ - Low impedance mode prevents false readings due to "Ghost" voltage
- NCV – Non-Contact Voltage Detector
- Built-In Flashlight
- Continuity buzzer and Diode Test
- Peak Mode, Min/Max and Data Hold function
- Auto Power Off

Function	Range	Accuracy
AC TRMS Current	600.0A - 1000A	±(2.5% +8)
DC Current	600.0A - 1000A	±(2.8% +5)
AC TRMS Voltage	6.000V - 1000V	±(1.5% +5)
DC Voltage	600.0mV - 1500V	±(1.5% +8)
LoZ AC TRMS Voltage	6.000V - 1000V	±(3.0% +40)
AC+DC TRMS Voltage	6.000V - 1000V	±(2.5% +20)
AC Voltage Harmonic	1 - 25 (20 - 75Hz) [0.1% THD]	±(5.0% +8)
	1 - 8 (75 - 400Hz) [0.1% THD]	±(6.0% +8)
AC Current Harmonic	1 - 25 (20 - 75Hz) [0.1% THD]	±(5.0% +20)
DC Power	99.99kW - 999.9kW	±(3.0% +5)
AC Power	99.99kW/kVA/kVAR	±(3.0% +5)
	999.9kW/kVA/kVAR	
Power Factor	0.20 - 1.00	±3°
Energy	9.999kW/kVA/kVAR	
	99.99kW/kVA/kVAR	±(3.0% +5)
Resistance	600.0Ω - 60.00MΩ	±(1.5% +5)
Frequency	9.999Hz - 9.99kHz	±(1.2% +6)
Capacitance	60.0nF - 6000µF	±(3.0% +8)
Temperature	-40°C - 1000°C	±(1.5% +3°C)
Duty Cycle	10.0% - 90%	±(1.2% +8)
Size	236 x 66 x 44mm	
Weight	350g	



BATTERY TESTER

The MT235 battery tester measures all kinds of batteries. The user can choose three measurement methods according to the battery shape and read the Voltage on the LCD display. Proper use and care of this tester will provide many years of reliable service.

Features

- Three measurement methods
- Pocket size
- Easy to read LCD display
- Easy to use
- Light weight and portable

Battery Type	Load Current	Minimum Voltage for Good
Button cell 1.5V	50mA	1.125V±0.09V
AAA-N-1.5V	50mA	1.125V±0.09V
AA-C-D-1.5V	150mA	1.125V±0.09V
Lithium 3V	100mA	2.25V±0.18V
6V	10mA	4.5V±0.36V
9V	10mA	6.75V±0.54V
12V	10mA	9V±0.72V
15V	10mA	11.25V±0.9V
22.5V	10mA	16.875±1.35V



MT235

CONTRACTORS TEST KITS



CONTRACTORS PRO COMBO KIT

Kit Includes:



MTK25

MTKBAG
Heavy Duty
Meter Case



MT330
Earth Resistance
Tester



MT350
Loop/PSC Impedance
Tester



MT550
Digital Insulation
Tester



MT930
Phase Rotation
Meter



MT310
ELCB Tester



MT1877
IP67 Industrial
Multimeter



MT720
400A AC
Clamp Meter

HVAC PRO COMBO KIT

Kit Includes:



MTK15

MTKBAG
Heavy Duty
Meter Case



MT310
ELCB Tester



MT691 IR
Thermometer



MT100 Continuity &
Bell Tester



MT150 50M Laser
Distance Meter



MT720
400A AC
Clamp Meter

APPRENTICE PRO COMBO KIT

Kit Includes:



MTK10

MTKBAG
Heavy Duty
Meter Case



MT310
ELCB Tester



MT500
Analogue Insulation
Tester



MT100 Continuity &
Bell Tester



MT403 NCV
Detector



MT720
400A AC
Clamp Meter



MTCK5

APPRENTICE COMBO KIT

- **MT500** 1000V Analogue Insulation Tester
 - 3 test ranges 250V-500V-1000V
 - 600V AC
 - Live Circuit warning and buzzer
 - CAT IV 600V
- **MT720** 400A AC True RMS Clamp Meter
 - Ø30mm Cable Clamp Size
 - 4000 Count Backlit LCD Display
 - 1000V AC
 - CAT III 600V



MTCK2

STARTER COMBO KIT

Combo Includes:

- **MT723** 400A AC/DC True RMS Clamp Meter
 - Ø30mm Cable Clamp Size
 - 4000 Count Backlit LCD Display
 - 1000V AC/DC
 - CAT III 600V
- **MT26** IP67 TRMS Bluetooth Multimeter
 - 600V AC/DC
 - 4000 Count Backlit LCD Display
 - Temperature Measurement -18°C to 760°C
 - CAT III 600V



MTCK4

HVAC COMBO KIT

Combo Includes:

- **MT723** 400A AC/DC True RMS Clamp Meter
 - Ø30mm Cable Clamp Size
 - 4000 Count Backlit LCD Display
 - 1000V AC/DC
 - CAT III 600V
- **MT691** Dual Laser Infrared Thermometer
 - -50°C to 650°C
 - Spot Ratio 12:1
 - Response time 150ms
- **MT150** Laser Distance Meter
 - 50 meters
 - Bluetooth 4.0
 - Distance measuring and estimate tool



MTCK1

CONTRACTOR COMBO KIT

Combo Includes:

- **MT1885** IP67 True RMS Bluetooth Multimeter
 - 1500V DC / 1000V AC
 - 6000 Count Backlit LCD Display
 - Temperature measurement from -20°C to 1000°C
 - CAT IV 600V
- **MT723** 400A AC/DC True RMS Clamp Meter
 - Ø30mm Cable Clamp Size
 - 4000 Count Backlit LCD Display
 - 1000V AC/DC
 - CAT III 600V



MTCK3

MINING COMBO KIT

Combo Includes:

- **MT565** Bluetooth Insulation Tester and Multimeter
 - 5 insulation test ranges 50V-100V-250V-500V-1000V
 - Insulation Resistance up to 5GΩ
 - 50 000 count backlit LCD display
 - 1000V AC/DC
 - Temperature Measurement -50°C to 1200°C
 - CAT IV 600V
- **MT740** 3000A TRMS AC Clamp Adaptor
 - Ø180mm Jaw Size
 - CAT IV 600V



EVSE ADAPTOR

The MT290 is an extender for interfacing Electric Vehicle Supply Equipment (EVSE) to test the socket of an installation tester for verification of electrical safety and function of all single and three phase EV charge points. This easy-to-use instrument, used in conjunction with the MT390 or similar meter offers an electrical contractor a universal tool designed to thoroughly test Mode 3 AC Electric Vehicle charging stations. The adaptor is designed to simulate the connection of an electric vehicle to an under-test charging point, with the safety feature of the PE Pre-Test, the PE conductor can be tested for possible presence of dangerous voltage against earth. A rotary switch for the Proximity Pilot (PP) state "Cable Simulation" can simulate various current capabilities of charging cables, while the rotary switch for Control Pilot (CP) state "Vehicle Simulation" can select and simulate various charging states. Measurements on live conductors can be undertaken by either using the front mounted mains socket or the 4mm measuring terminals of L1, L2, L3, N and PE of the EVSE adaptor. Standard accessories include the Type 2 and Type 1 plugs complete with a hard carrying case. The housing of the MT290 IP54 for dust and splash proof water protection.

Features

- Testing adaptor for Mode 3 supply equipment
- EV connection for Type 2 and Type 1
- Measuring terminals L1, L2, L3, N and PE
- Mains socket for connection to check an external load
- Single phase system with Max input voltage up to 250V
- Three phase system with Max input voltage up to 430V
- Separate phase indication by three LED lamps to indicate voltage present
- PE-Pre-test function
- Simulation of CP Error "E" and PE Error (Earth Fault)
- Rotary dials simulate PP State or CP State

Function	Range
Input	Max 250V (single-phase system) Max 430V (three-phase system), 50/60Hz, Max 10A/200.0mV – 600V
EVC-200 Connector	AC charging mode 3. Suitable for Type 2 wall top contact or fixed cable with vehicle connection (type 2 7P operation phase)
EVC-100 Connector	AC charging mode 3. Suitable for Type 1 with vehicle connection (type 1 5P single-phase)
PE Pre-Test	Yes open (Error condition or disconnection of plug) 13A Coding for maximum current of the EV cable
PP Simulation	20A 32A EVSE is connected and can operate in any 63A of these coding position.
CP Simulation	states A (EV disconnect) states B (EV connected) states C (EV charged without ventilation) states D (EV charged with ventilation)
CP error "E"	on (CP short to PE via diode / off
PE error	on (PE error) / off
Size	227 x 115 x 60mm
Weight	832gm (without connection cables)



MT290



AUTOMOTIVE BATTERY TESTER

The MT245 Battery Tester adopts currently the world's most advanced conductance testing technology to easily, quickly and accurately measure status of a battery under test, with functions battery test, starting system test, charging system test and others. This Battery tester can calculate the actual cold cranking capability of the battery and the extent of aging, providing reliable analysis evidence for the test and maintenance of the battery. The starting system test is mainly to test and analyse the starting motor. Through testing the actual required cranking current and cranking voltage of the starting motor, the user can determine whether the starting motor is in perfect working order. All readings are displayed on the clear coloured LCD display, and using the Bluetooth function the meter wirelessly transmits data to the Android or iOS mobile App allowing the user to view, save, organise and share recordings.

Features

- Tests all automotive cranking lead acid batteries, including ordinary lead acid battery, AGM flat plate battery, AGM spiral battery, and Gel battery, EFB battery, etc
- Directly detects bad battery cells
- Polarity reverse connection protection, reverse connection will not damage the tester or affect the vehicle and battery
- Directly tests the battery with loss of electricity, no need to full charge before testing
- Testing standards include currently the worlds majority of battery standards, CCA, BCI, CA, MCA, JIS, DIN, IEC, EN, SAE, GB
- 2.4" TFT 240*320 pixel colour LCD display
- Test battery testing ranges from 100 to 2000 CCA
- Detects bad cells
- Test deep discharge battery
- Mini USB port for connecting directly to computer

Function	Range
Test Voltage Range	8 to 30V DC
Battery Type	Ordinary lead-acid battery, AGM flat battery, AGM spiral battery, colloidal battery, EFB battery, etc
Battery Capacity Range	30Ah – 200Ah
Test Method	Kelvin Four-terminal sensing
Test Battery Standard	CCA, BCI, CA, MCA, JIS, DIN, IEC, EN, SAE
Measuring Functions	Battery starting capacity test, starting load test, operation load test and charging system test
Size	168 x 78 x 38mm
Weight	265gm



MT245



Measuring Standard	Measuring Range
CCA	100 - 2000
BCI	100 - 2000
CA	100 - 2000
MCA	100 - 2000
JIS	26A17 - 245H52

Measuring Standard	Measuring Range
DIN	100 – 1400
IEC	100 – 1400
EN	100 – 2000
SAE	100 – 2000



1000V Certified Tools

The new and improved range of Major Tech's ever popular Pliers and Cutters are fully certified safe **1000V CHROME VANADIUM** working tools, and feature the highest quality design ensuring safety and comfort for all day working.



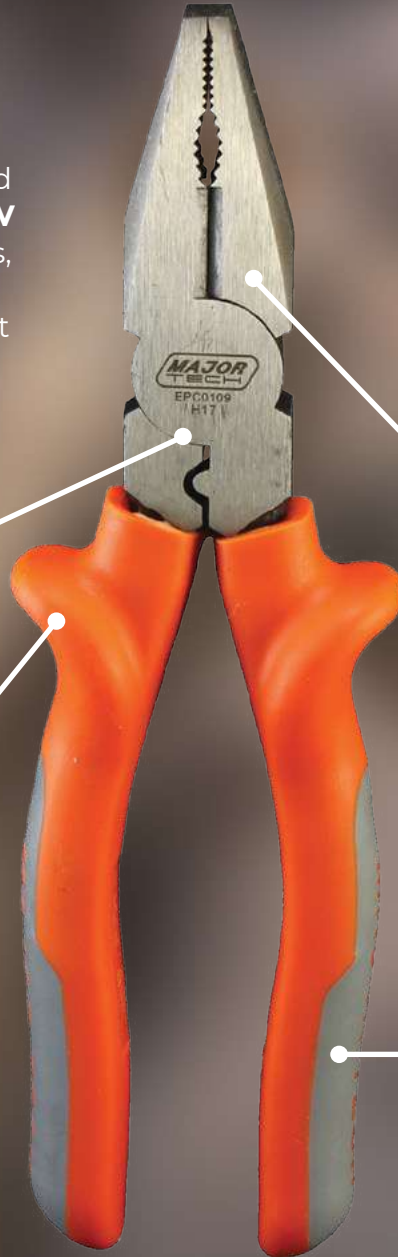
For the same price as ordinary tools

The highest quality pivots carefully machined for minimum play with easy one hand operation.

High comfort hand guards stop hand slipping onto live conductors.

High quality 50CRV chrome vanadium with polished finish, HRC of blade 63#.

Composite TPE handles are designed for non-slip safety, superb control and comfort in the hand.



CS0340



EP0106



LP0108



DP0106



DP0108



SP1006

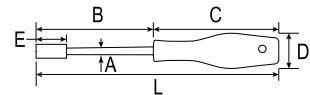


LP0106

METRIC NUT SCREWDRIVERS

Features

- Conforms to EN 60900 standards
- For use on or near electrical systems generating up to 1000V
- Reinforced Polypropylene handles for comfort and durability



Product Code	⊙	A	B	E	CxD	L
KTIN0205	5	7.2	125	31	105x30	230
KTIN0207	7	7.2	125	31	105x30	230
KTIN0208	8	7.2	125	31	105x30	230
KTIN0210	10	7.2	125	31	105x30	230
KTIN0211	11	8.1	125	31	118x41	240
KTIN0212	12	8.1	125	31	118x41	243
KTIN0213	13	8.1	125	31	118x41	243
KTIN0214	14	8.1	125	31	118x41	243

*Sizes in mm

REVERSABLE RATCHET SPANNER

Features

- Fully insulated for use on live conductors up to 1000V AC
- ½ Inch size (12.7mm)
- Conforms to EN 60900 standards
- Ratchet reverse
- Socket unlock button
- Individually tested to 10 000V



VRA125



Product Code	□	mm
VRA125	1/2"	250

1/2" T-HANDLE

Features

- Fully insulated for use on live conductors up to 1000V AC
- ½ Inch size (12.7mm)
- Conforms to EN 60900 standards
- T-Handle
- Individually tested to 10 000V



VTH125

Product Code	□	H	L
VTH125	1/2"	155mm	205mm

RATCHET EXTENSION BARS



Features

- ½ Inch size (12.7mm)
- Conforms to IEC 60900 standards
- Individually tested to 10 000V

Product Code	□	mm
VEB125	1/2"	125
VEB250	1/2"	250

INSULATED SOCKETS

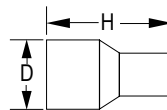


Features

- Fully insulated for use on live conductors up to 1000V AC
- Individually tested to 10 000V
- Chrome vanadium
- Conforms to EN 60900 standard
- Metric

Product Code	○	D	H
VSS10	10	19.7	54
VSS11	11	21.0	54
VSS12	12	22.1	54
VSS13	13	23.3	54
VSS14	14	24.7	54
VSS16	16	27.4	54
VSS17	17	28.1	54
VSS18	18	29.7	54
VSS19	19	30.0	54
VSS21	21	32.0	54
VSS22	22	34.0	54

*Sizes in mm



L-WRENCH HEX KEYS



Features

- Fully insulated for use on live conductors up to 1000V AC
- Conforms to EN 60900 standards
- Chrome vanadium steel
- Individually tested to 10 000V

Product Code	⬡	mm
VB03	3	130
VB04	4	140
VB05	5	160
VB06	6	180
VB08	8	210
VB10	10	240

*Sizes in mm

ADJUSTABLE SPANNERS



Features

- Chrome vanadium steel
- Individually tested to 10 000V
- High quality spanner that adjusts to suit various sizes of bolt and nut heads
- Useful when only a limited number of tools can be carried or kept in a tool kit
- Conforms to EN 60900 standards

Product Code	mm	⬡
VAS0108	200	30
VAS0110	250	36

*Sizes in mm



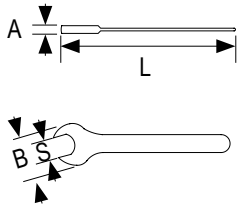
SPANNERS



SINGLE OPEN ENDED

Features

- Fully insulated for use on live conduits up to 1000V AC
- High quality open end spanner
- Unique design drives metric sizes
- Chrome vanadium steel
- Angled 15 degrees
- Conforms to EN60900 standards
- Individually tested to 10 000V



Product Code	⊠	A	B	L
VOSP07	7	7.5	20	90
VOSP08	8	8	22	90
VOSP10	10	9	26	105
VOSP11	11	9.5	29	110
VOSP12	12	10	32	125
VOSP13	13	10	33	135
VOSP14	14	11	35	140
VOSP15	15	11	38	150
VOSP16	16	12	40	160
VOSP17	17	12	42	160
VOSP18	18	12	44	165
VOSP19	19	13	45	170
VOSP21	21	14	48	188
VOSP22	22	14	52	200
VOSP24	24	15	55	225

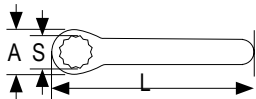
*Sizes in mm



RING GEAR WRENCH

Features

- Fully insulated for use on live conductors up to 1000V AC
- Conforms to EN 60900 standards
- Individually tested to 10 000V
- Chrome vanadium steel
- Unique design drives metric sizes
- 72 Teeth



Product Code	⊙	A	L
VRRS10	10	29.5	150
VRRS11	11	32	160
VRRS12	12	34.5	165
VRRS13	13	34.5	170
VRRS14	14	37.5	180
VRRS17	17	38	180
VRRS19	19	40	200

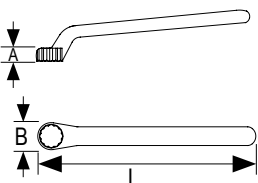
*Sizes in mm



RING WRENCH

Features

- Fully insulated for use on live conductors up to 1000V AC
- Conforms to EN 60900 standards
- Individually tested to 10 000V
- Chrome vanadium steel
- Unique design drives metric sizes



Product Code	⊠	A	B	L
VRSP07	7	10.5	17	150
VRSP08	8	12	19	155
VRSP09	9	12	20.5	160
VRSP10	10	12	20.5	165
VRSP11	11	12	23	175
VRSP12	12	12	24	185
VRSP13	13	13	26	190
VRSP14	14	13	27	200
VRSP15	15	13	29	205
VRSP16	16	14	30	205
VRSP17	17	14.5	32	210
VRSP18	18	14.5	33	220
VRSP19	19	14.5	35	230
VRSP21	21	16	38	240

*Sizes in mm





VHSL0112



PROFESSIONAL HACKSAW

Features

- Heavy, ergonomical, professional metal hacksaw
- Conforms to IEC 60900 standard
- Non-slipping two component safety soft handle
- Individually tested to 10 000V

Product Code	Length	Blade
VHSL0112	460mm	300mm



VHSJ0106



JUNIOR HACKSAW

Features

- Ideal for cutting small delicate pieces of electrical material where the weight alone of the standard hacksaw may cause damage to the workpiece
- Easier to use in confined spaces
- Conforms to IEC 60900 standard
- Individually tested to 10 000V

Product Code	Length	Handle	Blade
VHSJ0106	270mm	110mm	150mm



VCSS0108

CABLE SHEAR

Features

- 50mm Width blades
- 38mm Max cross section
- 7mm Max diameter cable
- Compact, one handed cable shear, cuts cleanly & effortlessly
- Conforms to IEC 60900 standard
- Note: Not suitable for cutting steel wire armoured cables

Product Code	Length	Weight	Blade Width
VCSS0108	210mm	360g	50mm



VSKN011S



VSKN012C



VSKN013S



1000V STRIPPING KNIVES

Features

- VSKN011S: Fixed straight blade
- VSKN012C: Fixed curved blade
- VSKN013S: Fixed curved blade with safety shoe to prevent damage to inner conductors
- Insulated for use on live conductors up to 1000V AC
- Strong comfortable shaped safety handle
- Complete with protective cap for storage
- Stainless steel

Product Code	Length	Blade
VSKN011S	180mm	50mm
VSKN012C	155mm	28mm
VSKN013S	155mm	38mm

1000V SETS



INSULATED SPANNER SET

Features

- 7 Piece Set
- Insulated Injection Open End Spanners
- Sizes: 8mm, 10mm, 12mm, 13mm, 14mm, 17mm, 19mm

Product Code	mm
KV-7RSP	8, 10, 12, 13, 14, 17, 19



KV-7RSP

INSULATED SOCKET SET

Features

- 10 Piece Set
- ½" Insulated T-Handle Wrench
- ½" Insulated Sockets
- Sizes: 10mm, 11mm, 12mm, 13mm, 14mm, 15mm, 16mm, 17mm, 18mm, 19mm

Product Code	Handle	mm
KV-10SS	200	10, 11, 12, 13, 14, 15, 16, 17, 18, 19



KV-10SS

INSULATED SOCKET SET

Features

- 9 Piece Set
- ½" Insulated Reversible Ratched Handle
- ½" Insulated 125mm Extension Bar
- ½" Insulated Sockets
- Sizes: 10mm, 12mm, 13mm, 14mm, 15mm, 17mm, 19mm

Product Code	Handle	mm
KV-9SS	200	10, 12, 13, 14, 15, 17, 19



KV-9SS

INSULATED RATCHET RING SPANNER SET

Features

- 5 Piece Set
- Insulated Ratchet Ring Spanners
- Sizes: 10mm, 12mm, 13mm, 14mm, 17mm

Product Code	mm
KV-5RRS	10, 12, 13, 14, 17



KV-5RRS

INSULATED RING SPANNER SET

Features

- 5 Piece Set
- Insulated Ring Spanners
- Sizes: 10mm, 12mm, 13mm, 14mm, 17mm

Product Code	mm
KV-5RSP	10, 12, 13, 14, 17



KV-5RSP



KTK0306 LP0108 DP0108 EPC0109



VSKN0115 & VSKN0135 VHT125

Optional:



MT405EX



TKC3



1000V TOOL KIT

KV3-28

Kit includes

- KTK0306 1000V Insulated Screwdriver Set
- VSKN0115: Fixed straight blade
- VSKN0135: Fixed curved blade
- EPC0109: 225mm Combination Pliers
- DP0108: 210mm Diagonal Cutting Pliers
- LP0108: Long Nose Pliers
- KV-7RSP: 7 Piece Insulated Spanner Set
- KV-9SS: 9 Piece Insulated Socket Set
- VHT125: 1/2" T-Handle
- TKC3: Large Zipper Case

■ Ideal for Solar Installations



KV-7RSP



KV-9SS



VAS0110 VHSL0112

VSKN0115 & VSKN0135

VEB250



VHT125



VB Range

PROFESSIONAL 1000V TOOL KIT

KV7-38

Kit includes

- KTK0306 1000V Insulated Screwdriver Set
- VSKN0115: Fixed straight blade
- VSKN0135: Fixed curved blade
- EPC0109: 225mm Combination Pliers
- DP0108: 210mm Diagonal Cutting Pliers
- LP0108: Long Nose Pliers
- KV-7RSP: 7 Piece Insulated Spanner Set
- KV-9SS: 9 Piece Insulated Socket Set
- VEB250: Ratchet Extension Bars
- VHT125: 1/2" T-Handle
- VAS0110: 110mm Adjustable Spanner
- VB03: 3mm L-Wrench Hex Keys
- VB04: 4mm L-Wrench Hex Keys
- VB05: 5mm L-Wrench Hex Keys
- VB06: 6mm L-Wrench Hex Keys
- VB08: 8mm L-Wrench Hex Keys
- VB10: 10mm L-Wrench Hex Keys
- VHSL0112: Professional Hacksaw
- TBP7: Toolbag Backpack

■ Ideal for Solar Installations



Optional:



KV-5RRS



KV-5RSP



MT405EX



TBP7



KTK0306



LP0108



DP0108



EPC0109



KV-7RSP



KV-9SS

TOOL KIT WITH DIGITAL MULTIMETER

Kit includes

- TH03914: Tool Bag
- MT870: 600V AC/DC True RMS Multimeter
- LP0106: 1000V 165mm Long Nose Plier
- EP0108: 1000V 200mm Combination Plier
- DP0108: 1000V 200mm Diagonal Cutting Plier
- KTK0306: 1000V Screwdriver Set
- CS0340: 1000V 38mm² Cable Shears
- AS0308: 25mm Adjustable Spanner
- UK0306: Utility Knife
- VNS1407: 3mm Neon Screwdriver
- HK0308: Metric Hex Key Set
- MPL0402: 3W 50Lm LED Headlight



Product Code	Length	Width	Depth
VTK1208	390mm	240mm	100mm

Supplied in TH03914 carrying case

VTK1208

TOOL KIT WITH DIGITAL CLAMP METER

Kit includes

- TH03914: Tool Bag
- MT720: 400A AC True RMS Clamp Meter
- UKEY01: Universal Key
- LP0106: 1000V 165mm Long Nose Plier
- EP0108: 1000V 200mm Combination Plier
- CS0340: 1000V 38mm² Cable Shears
- KTK0707SG: 7 Piece 1000V Screwdriver Set
- VNS1407: 3mm Neon Screwdriver
- KDC22: Cable Shears (22mm²)
- UK0306: Utility Knife
- AS0308: 25mm Adjustable Spanner



Product Code	Length	Width	Depth
VTK1210	390mm	240mm	100mm

Supplied in TH03914 carrying case

VTK1210

TOOL KIT WITH DIGITAL MULTIMETER

Kit includes

- TH03914: Tool Bag
- MT876: 600V AC/DC True RMS Multimeter
- HK0308: Metric Hex Key Set
- LP0106: 1000V 165mm Long Nose Plier
- EP0108: 1000V 200mm Combination Plier
- DP0108: 1000V 200mm Diagonal Cutting Plier
- CS0340: 1000V 38mm² Cable Shears
- KTK0707SG: 7 Piece 1000V Screwdriver Set
- VNS1407: 3mm Flat Neon Screwdriver
- UK0306: Utility Knife
- AS0308: 25mm Adjustable Spanner
- MPL0402: 3W 50Lm LED headlight



Product Code	Length	Width	Depth
VTK1211	390mm	240mm	100mm

Supplied in TH03914 carrying case

VTK1211



TPB7-9

Supplied in TPB7 Backpack

*Image advertises 2 inserts to show the inside & outside pockets. Only 1 insert is in each tool bag.

TOOL BACKPACK

Kit includes

- EPC0109: 225mm Combination Pliers
- EP0106: 165mm Combination Pliers
- DP0108: 210mm Diagonal Cutting Pliers
- DP0106: 165mm Diagonal Cutting Pliers
- LP0108: 205mm Long Nose Pliers
- LP0106: 165mm Long Nose Pliers
- CS0338: 38mm Cable Shear
- TS0320S: Terminal Driver
- UK0306: Utility Knife
- SP1006: 160mm Wire Stripper
- HV0305: 5m Tape Measure
- AS0308: 200mm Adjustable Spanner
- VNS1407: Neon Screwdriver Tester
- HDP0320: 500g Claw Hammer
- HSP0606: 150mm Junior Hacksaw
- KTK0707SG: 7 Piece 1000V Screwdriver Set



Product Code	Length	Width	Depth
TBP7-9	450mm	180mm	400mm



TBP5-9

Supplied in the NEW DESIGN TBP5 Backpack

TOOL BACKPACK

Kit includes

- EPC0109: 225mm Combination Pliers
- EP0106: 165mm Combination Pliers
- DP0108: 210mm Diagonal Cutting Pliers
- DP0106: 165mm Diagonal Cutting Pliers
- LP0108: 205mm Long Nose Pliers
- LP0106: 165mm Long Nose Pliers
- CS0338: 38mm Cable Shear
- TS0320S: Terminal Driver
- UK0306: Utility Knife
- SP1006: 160mm Wire Stripper
- HV0305: 5m Tape Measure
- AS0308: 200mm Adjustable Spanner
- VNS1407: Neon Screwdriver Tester
- HDP0320: 500g Claw Hammer
- HSP0606: 150mm Junior Hacksaw
- KTK0707SG: 7 Piece 1000V Screwdriver Set



Product Code	Length	Width	Depth
TBP5-9	450mm	180mm	400mm



MT1881
OPTIONAL EXTRA

TKC3-9

ELECTRICIANS TOOL KIT

Kit includes

- EPC0109: 225mm Combination Pliers
- EP0106: 165mm Combination Pliers
- DP0108: 210mm Diagonal Cutting Pliers
- DP0106: 165mm Diagonal Cutting Pliers
- LP0108: 205mm Long Nose Pliers
- LP0106: 165mm Long Nose Pliers
- CS0338: 38mm Cable Shear
- TSD0320S: Terminal Driver
- UK0306: Utility Knife
- SP1006: 160mm Wire Stripper
- HV0305: 5m Tape Measure
- AS0308: 200mm Adjustable Spanner
- VNS1407: Neon Screwdriver Tester
- HDP0320: 500g Claw Hammer
- HSP0606: 150mm Junior Hacksaw
- KTK0707SG: 7 Piece 1000V Screwdriver Set



MT1881 Suggested Optional Extra

- Please refer to our Instruments Catalogue for specifications
- Not included in this kit

Product Code	Length	Width	Depth
TKC3-9	410mm	320mm	100mm

Supplied in TKC3 carrying case



STARTER ELECTRICIANS KIT

Kit includes

- LP0106: 170mm Long Nose Plier
- EP0106: 165mm Electricians Plier
- DP0106: 165mm Diagonal Cutting Plier
- KTK0306: 1000V Insulated Screwdriver Set
- KDC22: 22mm² Cross Section Cable Shear
- AS0306: 155mm Adjustable Spanner
- UKEY01: Universal Key
- UK0306: Utility Knife

Product Code	Length	Width	Depth
TKE1214	320mm	230mm	110mm

■ Supplied with TKC2 Carrying Case



TKE1214

MAINTENANCE TOOL KIT WITH SOLDERING IRON

Kit includes

- HV0303: 3m Tape Measure
- HK0308: Metric Hex Key Set
- EP0106: 165mm 1000V Combination Pliers
- DP0106: 165mm 1000V Diagonal Cutting Pliers
- LP0106: 170mm 1000V Long Nose Pliers
- KTK0707SG: 1000V Insulated Screwdriver Set
- AS0306: 155mm Adjustable Spanner
- MTD46: Gas Soldering Iron
- SL518: Multi Core Solder
- SLM0806: Magnetic Spirit Level
- MPL0402: 3W LED Headlamp
- MPK0901N: Folding Knife

Product Code	Length	Width	Depth
TKE1219	320mm	230mm	110mm

■ Supplied with TKC2 Carrying Case



TKE1219

APPRENTICE TOOL KIT

Kit includes

- TKC1: Tool Bag
- HV0303: 3m Measuring Tape
- HK0308: Metric Hex Key Set
- EP0106: 1000V 165mm Combination Plier
- DP0106: 1000V 165mm Diagonal Cutting Plier
- LP0106: 1000V 165mm Long Nose Plier
- KTK0306: 1000V Screwdriver Set
- AS0306: 20mm Adjustable Spanner

Product Code	Length	Width	Depth
VTK1	300mm	160mm	60mm

■ Supplied with TKC1 Carrying Case



VTK1



CTR0334

MC4 SOLAR CRIMPING TOOL

Features

- Ideal for Solar Panel PV cable terminals
- Ratchet mechanism with pressure adjustment
- Suitable for left or right hand operation
- Automatic release with manual override
- Professional quality drop forged jaws
- Terminal sizes: 2.5mm²; 4.0mm²; 6mm²

Product Code	Length	Head	Handle
CTR0334	250mm	38mm	210mm



CTR0816

RATCHET CRIMPING TOOL

Features

- Ratchet crimping tool with automatic release and manual override
- Self-adjusting wire end tool with side entry
- Automatically adjusts to the desired sleeve size
- Produces square crimp profile
- Crimping tool for cord end (bootlace) terminals from 0.08mm² to 16mm²
- Crimping tool for coax terminals
- Ergonomic design minimises operator fatigue

Product Code	Length	Head	Handle
CTR0816	180mm	43mm	110mm



CTR1020

ADJUSTABLE INDENT CRIMPING TOOL

Features

- Heavy duty point indent crimping tool
- Graduated scale and easy screw adjustment allow quick selection of sizes
- Non-ratchet for use on terminals
- Terminal sizes: 10mm² - 120mm²

Product Code	Length	Crimping Type
CTR1020	570mm	Indent

- Non-Insulated Terminals



HCT150

HYDRAULIC CRIMPING TOOL SET

Features

- Safety system inside
- Crimping force: 60KN
- Stroke: 15mm
- Oil capacity: 60cc
- Crimping Type: Hexagon
- Crimping dies (Included):
Copper: 10mm², 16mm², 25mm², 35mm², 50mm², 70mm², 95mm², 120mm², 150mm²

Product Code	Dies
HCT150	10mm ² - 150mm ²

- Includes hard plastic carry case



CS0360

CABLE SHEAR

Features

- Max diameter cable 20mm
- Max cross section 60mm²
- Insulated handle
- Note: Not suitable for cutting steel wire armoured cable
- Cuts & strips small & large cables
- Indent Crimp
- Chrome Vanadium

Product Code	Length	Head	Handle
CS0360	235mm	60mm	140mm

BATTERY POWERED CRIMPERS



BATTERY POWERED CRIMPING TOOL

Features

- OLED Display showing Crimping Time, Electricity Quantity, Maintenance Reminding and Fault Code
- Crimping head rotates 350°
- Two stage hydraulic system with fast feed and power control
- Quick motor stop guarantees highest safety for the operator
- Automatic retraction when crimp is completed
- Electronic control and monitor of crimping operation
- Ergonomic design and optimised position of centre of gravity
- Rated pressure: 120KN
- Oil capacity: 160ml
- Stroke: 42mm
- 5 - 8 seconds per cycle time
- Max crimping: **Copper** 400mm² / **Aluminium** 300mm²

Product Code	Crimping Dies
ECT400	16, 25, 35, 50, 70, 95, 120 150, 185, 240, 300, 400mm ²



Kit Includes:

- Crimping Tool & Crimping Dies
- 2x 4.0Ah Batteries
- 1x Charger
- Carrying Case



ECT400

BATTERY POWERED CRIMPING TOOL

Features

- OLED Display showing Pressing Time, Battery Percentage, Maintenance Notes and Fault Code
- 180° Swivelling Barrel
- Two stage hydraulic system: hydraulic ram output provides more force for reliable connection
- Ergonomic design with light weight and in-line grip
- Easily work overhead and in tight spaces
- Rated pressure: 50KN
- Stroke: 14mm
- 2.5 - 4 seconds per cycle time
- Max crimping: **Copper** 240mm² / **Aluminium** 185mm²

Product Code	Crimping Dies
ECT240	16, 25, 35, 50, 70, 95, 120 150, 185, 240mm ²



Kit Includes:

- Crimping Tool & Crimping Dies
- 2x 2.5Ah Batteries
- 1x Charger
- Carrying Case



ECT240

BATTERY POWERED CABLE CUTTING TOOL

Features

- OLED Display
- Two stage hydraulic system with fast feed and power control
- Fast and reliable way to cut
- Micro-computer control system
- Cuts different cable materials including armoured Cu/Al cable, ACSR, Cu/Al cable
- Cutting Force: 60KN
- Stroke: 86mm
- Cutting Range: Ø85mm

Product Code	Cutting Range
ECC85	Ø85mm



Kit Includes:

- Battery Powered Cable Cutter
- 2x 4.0Ah Batteries
- 1x Charger
- Carrying Case



ECC85

HEAVY DUTY BI-METAL HOLESAW

Features

- Alternate set variable pitch 4/6 teeth - producing tighter grip, less vibration, cleaner faster cut
- Holesaws can be used in electric pneumatic drills, vertical drilling machines and lathes
- Heavy duty bi-metal construction
- Original pattern pressed gap gives full cutting depth
- M3 steel cutting edge keeps teeth sharper longer
- Shatterproof body designed for staying power
- Holesaws, arbors and pilot drills are fully interchangeable with all leading manufacturers of holesaw products
- Ideal for cutting brass, copper, steel, aluminium and wood



KHS Range

* SUGGESTED ARBOR

Product Code	Hole	Arbor 1*	Arbor 2*	Product Code	Hole	Arbor 1*	Arbor 2*
KHS16	16mm	AB14	AB19	KHS67	67mm	AB35	AB45
KHS20	20mm	AB14	AB19	KHS70	70mm	AB35	AB45
KHS22	22mm	AB14	AB19	KHS73	73mm	AB35	AB45
KHS25	25mm	AB14	AB19	KHS75	75mm	AB35	AB45
KHS32	32mm	AB35	AB45	KHS83	83mm	AB35	AB45
KHS38	38mm	AB35	AB45	KHS92	92mm	AB35	AB45
KHS40	40mm	AB35	AB45	KHS95	95mm	AB35	AB45
KHS51	51mm	AB35	AB45	KHS105	105mm	AB35	AB45
KHS54	54mm	AB35	AB45	KHS108	108mm	AB35	AB45
KHS57	57mm	AB35	AB45	KHS111	111mm	AB35	AB45
KHS64	64mm	AB35	AB45	KHS121	121mm	AB35	AB45
KHS65	65mm	AB35	AB45				



AU Range

AUGER BITS

Features

- Operates on all wood Types
- Fast & Accurate Drilling
- Steel Material: 40CR
- Single twist
- Spur tip
- 70mm Length

Product Code	Hole	Shank
AU16	16mm	6.3mm
AU20	20mm	6.3mm
AU22	22mm	6.3mm
AU25	25mm	6.3mm
AU28	28mm	6.3mm
AU32	32mm	6.3mm



FSB Range

FLAT SPADE BITS

Features

- Hardened & grounded high grade carbon steel construction
- 3-point tip with cross cutter
- Precision angles for minimum jamming
- Triangular shank for non-slip grip
- Sizes deep etched for easy identity

Product Code	Hole	Shank
FSB16	16mm	Hex
FSB20	20mm	Hex
FSB22	22mm	Hex
FSB25	25mm	Hex
FSB32	32mm	Hex
FSB38	38mm	Hex
FSB40	40mm	Hex



Why buy a Major Tech product?

Every electrician, technician or engineer often look for the right tool, that extra feature, or that new technological enhancement to make their jobs easier and more efficient. Major Tech's range offers it all, even when purchasing your first electrical tester and toolbox or simply replacing misplaced or a faulty item. We at Major Tech strive to make acquiring that new or replacement instrument or tool simple and easy by ensuring that through our electrical wholesalers and distributors we have a comprehensive range readily available. Major Tech ensure the highest quality of products and all our instruments and tools are covered by a two-year warranty. Should you require technical advice, trained personnel are available to assist with queries.

Why Stock Major Tech products?

At Major Tech we want to ensure that you our trade and retail partner, have a full range of test and measurement instruments, electrical tools, and many other Major Tech products available to your consumers in store. Capitalising on their impulse or spontaneous purchase will essentially improve customer satisfaction. We therefore provide modern lockable display cabinets, at no cost, to accommodate a standard range of Major Tech products that meet your market requirements. We can offer you a proposal of recommended products to stock and will assist in maintaining and servicing these display cabinets to ensure that they are always fully stocked. Full technical support is always readily available to ensure your customer purchases the correct product.





INSTRUMENTS & TOOLS NEW PRODUCTS 2023

MAJOR TECH (PTY) LTD

Australia

A.B.N 65 647 597 153

Address: 1/15 Hinkler Court, Brendale, QLD, 4500, Australia

Telephone: +61 7 3465 0992

Email: info@majortech.com.au

Web: www.majortech.com.au



Download Catalogue



View Website

South Africa

Reg: 1992/001859/07

Address: T9 Industrial Village, Sam Green Road,
Tunney Ext 9, Elandsfontein

Postal Box: P.O. Box 888, Isando 1600, South Africa

Telephone: +27 (0) 86 162 5678

Email: sales@major-tech.com

Web: www.major-tech.com

