



MTi60 Thermal Imager

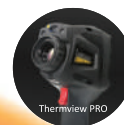
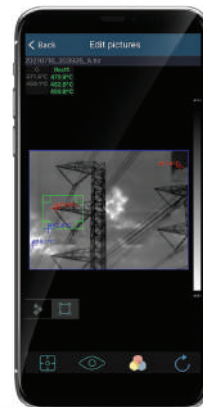
The MTi60 High-Performance Thermal Imager with a resolution of 384x288 pix at 50Hz, built-in Laser Distance meter and Wi-Fi ensures that thermal inspections are conducted with greater ease, more effective, and with extreme accuracy. With manual focus, large bright touch screen and easy to access toolbar the user can fine-tune and analyze images quickly and effectively. The touch screen allows the user to manually add up to 3 spot or area measurements, Hot/Cold spot marker that automatically finds the hottest and coldest spots and adjustable zone alarm. It features temperature ranges from -20°C to 650°C, 32X digital zoom, HDMI video output and on-screen adjustable level and span. The hard protective carry case contains a memory card, lithium polymer battery & power supply, and USB cable.

Features

- 384 x 288 Pixel Thermal Detector
- 110,592 points real temperature
- 50Hz Image Frequency
- Laser Distance 30m
- 3 Area and 2 Line Analysis
- 3 Manual Spots
- Hot, Cold and Centre Spot Temperature
- 3.5" TFT LCD display, Touch Screen
- Instant share & save via WiFi to PC, iOS and Android smart devices
- Colour Palettes include Iron, Rainbow, Grey, Grey Inverted, Brown, Blue/Red, Feather, Zone Alarm
- Rugged and industrial design casing
- Easy to use functions via touch screen



| Function | Range |
|--|--|
| Imaging and Optical Data | |
| Field Of View | 17° x 12.7° |
| Spatial Resolution | 0.77mrad |
| Thermal Sensitivity | <0.08° at 30°C (86°F)/80mK |
| Image Frequency | 50Hz |
| Focus Mode Manual | |
| Focus Mode | Manual Focus |
| Focal Length | 22mm |
| Focal Plane Array (FPA)/Spectral Range | Uncooled Microbolometer/8-14µm |
| IR Resolution | 384 x 288 pixels |
| Image Presentation | |
| Display | 3.5" TFT LCD, Touch Screen |
| Display Resolution | 640 x 480 pixels |
| Image Modes | IR Image, Visual Image, Pic-in-Pic, Auto Fusion |
| Colour Palettes | Iron, Rainbow, Grey, Grey Inverted, Brown, Blue/Red, Feather, Zone Alarm |
| Measurements | |
| Object Temperature Range | -20 to 150°C (-4 to 302°F) / 0 to 650°C (32 to 1202°F) |
| Object Temperature Accuracy | ±2°C (3.6°F) or ±2% of reading |
| Laser Distance | 0.05 to 30m (0.15 to 98ft) |
| Laser Distance Accuracy | Typically ±1.5mm (0.06in) |
| Measurement Analysis | |
| Spot | Centre Spot & 3 Manual spots |
| Automatic | Auto Hot & Cold markers |
| Line | 2 lines analyse |
| Area | 3 areas analyse |
| Adjustable Emissivity | 0.01 to 1.0 |
| Measurement Correction | Emissivity, Reflected Temperature, Ambient Temperature, Humidity, Infrared Compensation, Distance Compensation |
| Storage | |
| Storage Media | 8GB Micro SD Card, 3.4GB Internal EMMC |
| Video Storage Mode | Standard MPEG-4 |
| Image Storage Mode | JPEG and HIR and simultaneous visual image including measurement data |
| Data Communication Interfaces | |
| Interfaces | USB-Mini, HDMI |
| Video Out | HDMI |
| Wi-Fi | 802.11, transfer images and real time video stream |
| Size | 260 x 101 x 120mm |
| Weight | 846g |



MTi60 | **384 x 288 Pixels with Wi-Fi**

**Contact Us
South Africa**

www.major-tech.com sales@major-tech.com

Australia

www.major-tech.com.au info@major-tech.com.au