



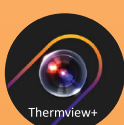
## MT2005 Thermal Multimeter

### TRUE RMS

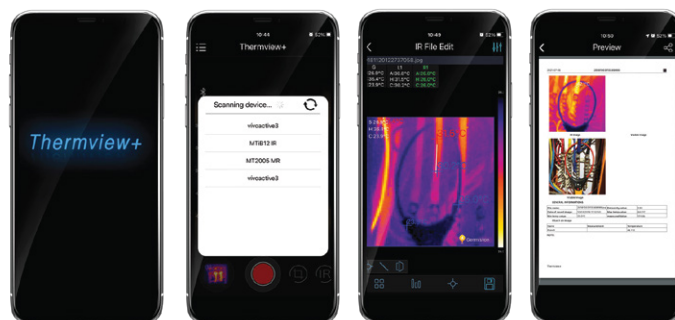
The MT2005 Professional True RMS Industrial Digital Multimeter with built-in 80 x 80 Thermal Imager, and TFT color LCD display, provides fast A/D converting sampling time, high accuracy. It is a fast and easy solution to find and solve problems with production equipment, providing Bluetooth technology BLE. It is a safe instrument with double molded plastic housing and has a IP65 waterproof rating.

### Features

- 6000 count 2.8" TFT Color LCD display
- Built-in Thermal imager with MIN/MAX
- Temperature Range -20°C to 260°C
- 50Hz fast Thermal image frame rate
- DC voltage
- AC, AC+DC TRMS Voltage
- DC current
- AC, AC+DC TRMS current
- Resistance and Continuity test
- Diode test
- Capacity
- Frequency
- Duty Cycle
- Temperature with K-type probe
- Flexible coil current



Function	Range	Accuracy
<b>Imaging and Optical Data</b>		
Field of View	21° x 21°/0.5m	
Spatial resolution (IFOV)	4.53mrad	
Thermal sensitivity/NETD	<0.1°C @ +30°C/100mK	
Image Range	50Hz	
IR Resolution	80 x 80 pixels	
<b>Image Presentation</b>		
Display	2.8" LCD, 240 x 320 pixels	
<b>Measurement</b>		
Temperature range	-20°C to 260°C	±(3% +3°C)
<b>Measurement analysis</b>		
Spot	Center spot	
Automatic	Hot & cold markers	
Adjustable Emmisivity	Variable 0.01 to 0.99	
Measurement corrections	Emissivity, reflected temperature	
Data Communications	Bluetooth BLE	
<b>Interfaces</b>		
<b>Multimeter</b>		
DC Voltage	600.0mV - 1000V	±(0.09% +5)
AC Voltage	600.0mV - 1000V	±(0.8% +5)
AC + DC TRMS Voltage	6.000V - 1000V	±(2.4% +20)
DC Current	600.0μA - 10A	±(0.9% +5)
AC Current	600.0μA - 10A	±(0.12% +5)
Flexi Coil AC Current	30.00A - 3000A	±(0.8% +5)
Duty Cycle	5.0% to 95.0%	±(1.2% +2)
Resistance	600.0Ω - 60MΩ	±(0.5% +5)
Frequency	40.00Hz - 10MHz	±(0.09% +5)
Capacitance	60.00nF - 6mF	±(1.2% +8)
Temperature	-40 - 600°C	±( 1.5% + 3)
Digital Display	6000 count 2,8" TFT	
Input impedance	>10MΩ VDC & >10MΩ VAC	
Size	195 x 88 x 58mm	
Weight	540g	



Built-in Infrared Thermal Imager offers you non invasive measurements of potential hot spots. These images can be transferred via Bluetooth to a Smartphone for analysis. Simply turn on the bluetooth of the smartphone. Press the Thermview+ icon and enter into the home interface, then press the Connect Device icon and the bluetooth device name will appear. Touch the device name listed in Bluetooth devices list to connect to the device.

**MT2005** | **Thermal Multimeter**

**Contact Us**  
**South Africa**

[www.major-tech.com](http://www.major-tech.com) [sales@major-tech.com](mailto:sales@major-tech.com)

**Australia**

[www.majortech.com.au](http://www.majortech.com.au) [info@majortech.com.au](mailto:info@majortech.com.au)