



INSTRUCTION MANUAL
SFX-50C / SFX-100C
SOLAR LED FLOODLIGHTS



MAJOR TECH (PTY) LTD

South Africa

🌐 www.major-tech.com

✉ sales@major-tech.com

Australia

🌐 www.majortech.com.au

✉ info@majortech.com.au



1. IMPORTANT NOTES

- Install the photovoltaic panel and floodlight on a flat, stable surface, ensuring they are securely fastened to prevent falling and potential injury.
- Position the photovoltaic panel at an optimal angle to maximize solar charging time.
- This product contains recyclable batteries. Please do not dispose of them in the trash. Do not dispose of this product in fire, as it may explode.
- Do not connect to mains power alternating current as this will damage the floodlight.
- To maximise performance, clean any dust or debris on the surface of the solar photovoltaic panel every 3-4 months. Clean with water and non-abrasive cleaners, such as dishwashing liquid.
- During autumn, winter, or continuous cloudy/rainy days, charging efficiency may decrease, shortening the lighting time.
- Avoid installing floodlights near air conditioners, heating objects, or high-voltage power grid systems.

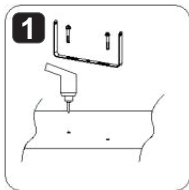
2. INSTRUCTIONS FOR USE

1. Remove the floodlight from its packaging and proceed to connect the photovoltaic panel. Allow the floodlight to charge and activate.
2. Once the floodlight is activated, it will automatically default to the "AUTO" mode. Users have the option to select their preferred working mode using the provided remote control.
3. Follow the designated installation procedure to properly install the floodlight.
4. Insufficient charging time affects the lighting duration and brightness during evening hours. However, when the floodlight receives sufficient charging in subsequent cycles, it will resume normal operation. Please note that during autumn, winter, or extended periods of cloudy or rainy weather, the charging efficiency may be reduced, resulting in shorter lighting durations.

3. PRODUCT PARAMETERS

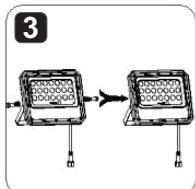
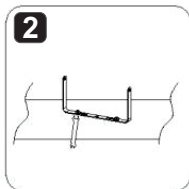
	Model/Parameter	
Part Number	SFX-50C	SFX-100C
Solar power (W)	6W/5V	10W/5V
Battery	5000mAh	10000mAh
Lumen (max) LM	700LM	1400LM
Battery type	LiFePO4 Battery - 3.2V	
Battery cycle life	>1200 times	
Installation height	3 to 6M	
Working time	>12H (full charge AUTO mode)	
IP rating	IP65	
Operating Temperature	Charge above 5°C, discharge above -10°C.	
Operating Humidity	95% RH	
Approvals	C-Tick	
Warranty	2 Years - Limited	

4. INSTALLATION



1. Drill a hole at the designated installation spot, considering the positions of the solar panel bracket and lamp body support bracket. Insert and secure the expansion screws into the hole. Ensure the solar panel is positioned away from the floodlight's light output or other light sources that could interfere with the Day/Night Auto Mode.

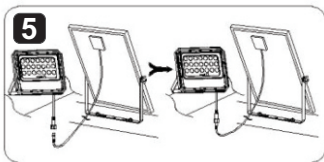
Please Note: Installation Height is 3-6m



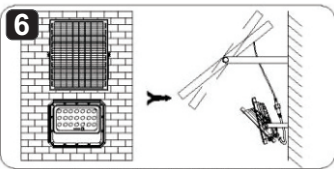
2. Utilize a spanner to fasten the screws tightly onto the light bracket and the floodlight support.

3. Securely attach the floodlight using outer hexagon screws.

4. Use screws to fix the solar panel in place.

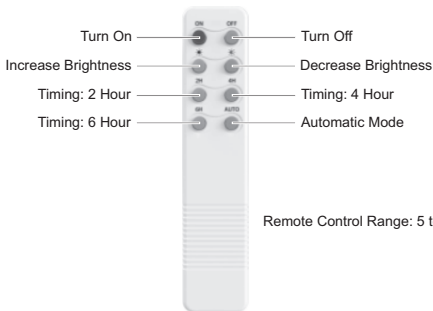


5. Connect the solar panel cable to the terminal on the floodlight and ensure a secure connection, this is to ensure the integrity of the IP65 rating remains intact.



6. Adjust the solar panel angle for optimal sunlight exposure, facing it to receive the most sunlight during the longest hours of the day.

5. REMOTE CONTROL



Remote Control Range: 5 to 10m

Key	Function	Application	Application conditions	Detailed description
【ON】	On	Single/without memory	Day and night	100% brightness and slowly decrease brightness, about 12-14 hours to light off.
	Permanent power off cancellation	Single/without memory	Day and night	When the light is off, press [ON] to cancel the permanent power off.
【OFF】	Off	Single/without memory	Day and night	Light off
	Permanent power off	Every day /with memory	Day and night	Press OFF key for 3seconds, the lamp will be OFF and still can be charged, but cannot be turned ON unless the "ON" key is pressed.
	Bright lighting	Single/without memory	Day and night	Press the key when the light is on, 165% brightness and not slowly decrease brightness. About 3 hours to light off.
	Dimmed lighting	Single/without memory	Day and night	Press the key when the light is on, 35% brightness and not slowly decrease brightness. About 12-14 hours to light off.
【2H】	Time control 2 hours	Every day /with memory	Night	165% brightness and not slowly decrease brightness, about 2 hours to light off.
【4H】	Time control 4 hours	Every day /with memory	Night	100% brightness and brightness slowly decrease brightness, about 4 hours to light off.
【6H】	Time control 6 hours	Every day /with memory	Night	100% brightness and brightness slowly decrease brightness, about 6 hours to light off.
【AUTO】	Time control 12 hours	Every day /with memory	Night	100% brightness and slowly decrease brightness, about 12-14 hours to light off.

Note: If the remote control turns off the floodlight for more than 48 hours, the floodlight enters sleep mode, where the standby current is 5uA. The floodlight must be connected to the solar panel for it to start working again.