



INSTRUCTION MANUAL
SFX-50C / SFX-100C
SOLAR LED FLOODLIGHTS



MAJOR TECH (PTY) LTD

South Africa

🌐 www.major-tech.com

✉ sales@major-tech.com

Australia

🌐 www.major-tech.com.au

✉ info@major-tech.com.au



1. IMPORTANT NOTES

- Please install on a flat and stable surface, and securely fasten the photovoltaic panel and the lamp body to prevent wind or other reasons from hurting people.
- The photovoltaic panel should be positioned at a good angle to ensure the longest lighting time for the photovoltaic panel.
- This product contains batteries which are recyclable, please do not throw them away. It is strictly prohibited to be disposed of this product in fire, it may explode.
- Please do not connect to 110/220V alternating current as this will damage the lamp body.
- In order to maximise performance, clean any dust or debris on the surface of the solar photovoltaic panel every 3-4 months.
- In autumn, winter, continuous cloudy or rainy days, the charging effect will be weakened and the lighting time will be shortened, which is normal.
- Avoid installing lamps near air conditioners, heating objects, or high-voltage power grid systems.

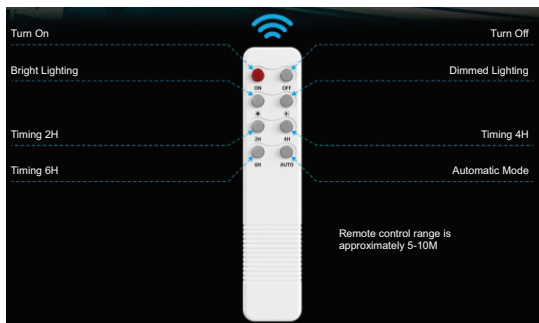
2. INSTRUCTIONS FOR USE

1. Remove the lamp body from its packaging and proceed to connect the photovoltaic panel. Allow the lamp to charge and activate.
2. Once the lamp is activated, it will automatically default to the "AUTO" mode. Users have the option to select their preferred working mode using the provided remote control.
3. Follow the designated installation procedure to properly install the lamp.
4. After the lamp has been installed, insufficient charging time may affect the lighting duration and brightness during evening hours. However, when the lamp receives sufficient charging in subsequent cycles, it will resume normal operation. Please note that during autumn, winter, or extended periods of cloudy or rainy weather, the charging efficiency may be reduced, resulting in shorter lighting durations.

3. PRODUCT PARAMETERS

Name	Model/Parameter	
	SFX-50C	SFX-100C
Solar power (W)	6W/5V	10W/5V
Battery	5AH	10AH
Lumen (max) LM	700LM	1400LM
Battery type	LiFePO4 Battery-3.2V	
Battery cycle life	>1200 times	
Installation height	3-6M	
Working time	>12H (full charge AUTO mode)	
IP rating	IP65	
Temperature and humidity	Temperature: charge above 5°C, dis-charge above -10°C. Working humidity: 95% RH	

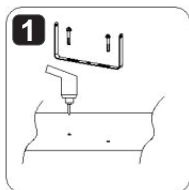
4. REMOTE CONTROL



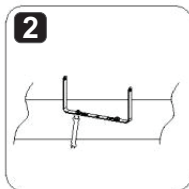
Key	Function	Application	Application conditions	Detailed description
【ON】	On	Single/without memory	Day and night	100% brightness and slowly decrease brightness, about 12-14 hours to light off.
	Permanent power off cancellation	Single/without memory	Day and night	When the light is off, press 【ON】 to cancel the permanent power off.
【OFF】	Off	Single/without memory	Day and night	Light off
	Permanent power off	Every day /with memory	Day and night	Press OFF key for 3seconds, the lamp will be OFF and still can be charged, but cannot be turned ON unless the "ON" key is pressed.
☀	Bright lighting	Single/without memory	Day and night	Press the key when the light is on, 165% brightness and not slowly decrease brightness. About 3 hours to light off.
🌙	Dimmed lighting	Single/without memory	Day and night	Press the key when the light is on, 35% brightness and not slowly decrease brightness. About 12-14 hours to light off.
【2H】	Time control 2 hours	Every day /with memory	Night	165% brightness and not slowly decrease brightness, about 2 hours to light off.
【4H】	Time control 4 hours	Every day /with memory	Night	100% brightness and brightness slowly decrease brightness, about 4 hours to light off.
【6H】	Time control 6 hours	Every day /with memory	Night	100% brightness and brightness slowly decrease brightness, about 6 hours to light off.
【AUTO】	Time control 12 hours	Every day /with memory	Night	100% brightness and slowly decrease brightness, about 12-14 hours to light off.

Note: After the remote control turns off the lamp for more than 48 hours, the lamp body enters the sleep mode, the standby current is 5uA. The lamp must be connected to the solar panel for it to work.

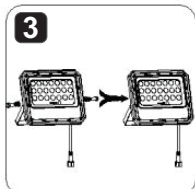
5. INSTALLATION



1. Begin by drilling a hole at the designated installation position, taking into consideration the location of the solar panel bracket and the lamp body support. Insert and secure the expansion screw into the hole.



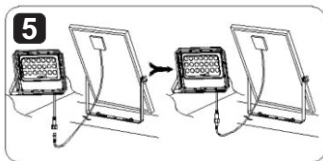
2. Utilize a spanner to fasten the screws tightly onto the light plate and the lamp body support.



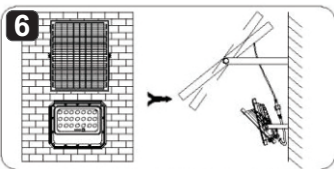
3. Securely attach the lamp body using outer hexagon screws.



4. Use screws to fix the solar panel in place.



5. Connect the solar panel cable to the terminal on the lamp body and ensure a secure connection



6. Adjust the angle of the solar panel to achieve optimal sunlight exposure.